

HNT ALUMINUM FRONT SKID

DOCUMENT: F6-17-1111_INST.PDF • LAST UPDATED: MARCH 2023

Thank you for purchasing this item from **LOBO Off-Road!** Please read through this entire document before proceeding with installation. If you are not confident in your mechanical skills, please seek the help of a professional to perform the installation. Check your packages immediately upon arrival to ensure that everything listed is included, and to check for damage during shipping.



APPLICATIONS

These installation instructions apply to the following LOBO Off-Road Products:

F6-17-1111 HNT ALUMINUM FRONT SKID PLATE | BRONCO

INCLUDED COMPONENTS

Please check your packages immediately upon arrival to ensure that everything listed is included, and to check for damage during shipping. If anything is missing or damaged, contact LOBO Off-Road.

- 1 HNT ALUMINUM FRONT SKID PLATE
- 1 LOBO INTERCOOLER-SKID MOUNT - LEFT
- 1 LOBO INTERCOOLER-SKID MOUNT - RIGHT

HARDWARE KIT

- 4 M10-1.50 X 30MM BUTTON HEAD CAP SCREW
- 4 M10-1.50 EXTRUDED "U" NUT

TOOLS NEEDED

- 16MM & 18MM WRENCH, SOCKET & RATCHET
- 18MM CROW'S FOOT WRENCH & SOCKET EXTENSION
- BLUE THREAD LOCKING COMPOUND (LOCTITE® 242 OR EQUIVALENT)

INSTALLATION PROCEDURE

1. **Park the vehicle on** a flat, level surface and set the parking brake. It may be helpful to lift the rear of the vehicle and place it on jack stands for stability while working. Wear safety glasses from this point forward.

2. **Use a 16mm wrench** to remove the four (4) factory skid plate bolts. Set the factory skid plate aside.



Photo 01

3. **Use an 18mm wrench** to remove the two (2) bolts fastening the front diff mount to the crossmember.



Photo 02

- 4. Working on one side** of the turbo intercooler at a time, use a 15mm wrench to remove the two (2) bolts attaching the intercooler mount to the vehicle frame.



Photo 03

Remove the intercooler mount from one side only, leaving the rubber grommet attached to the mounting foot of the intercooler.

- 5. Apply a drop of** blue threadlocker compound (Loctite® 242 or equivalent) to the OE intercooler mount bolts and re-insert them into the threaded holes on the vehicle's frame rail. Leave about 1/2" to 5/8" of threads showing under the bolt heads as shown.



Photo 04

- 6. Install a M10-1.50 Extruded "U" Nut** into place on each of the two hole locations on the sides of the Intercooler-skid mounts. Orient them so that the surface of the clip nut is flat against the outer surface of the bracket, with the threaded barrel of the clip nut on the inner surface, as shown in the image in the next step. It will be a tight fit due to the thickness of the bracket and may require a light tap with a dead blow hammer to tap the clip nut into place.
- 7. Identify the correct Lobo** Intercooler Mount for whichever side of the vehicle you are working on and

install it in place of the OE intercooler mount. It will be necessary to apply slight upward pressure to the intercooler as the mount is slid into place under the bolt heads.



Photo 05

It will be necessary install the mount at an angle, slotting it onto the the bolts one at a time then working the mount into place.



Photo 06

- 8. Push the mount upward** onto the rubber grommet on the intercooler's mounting foot and ensure that the

intercooler is properly seated into the mount as the bolts are tightened.



Photo 07

- 9. Use an 18mm wrench** to tighten the two intercooler mount bolts. It may be necessary to use a crow's foot and ratchet extension if installing the skid without removing the bumper.



Photo 08

- 10. Repeat the procedure to** remove the opposite side OE intercooler mount and replace it with the LOBO Intercooler Mount.

- 11. OPTIONAL: One of the** two rearward OE skid plate bolts (15mm head) is not reused in its original position. However, it may be reused in an optional location at the discretion of the installer. To do so, pre-install the LOBO Skid Plate using one of the OE skid plate bolts (15mm head) and both OE diff mount bolts (18mm head). Use a center punch or felt marker to mark a hole location in the factory steel diff skid, through the provided extra hole in the LOBO Skid Plate as shown below. Mock up skid bolting with 1 15mm

and both 18mm. trace hole. Remove skid and engine skid and drill

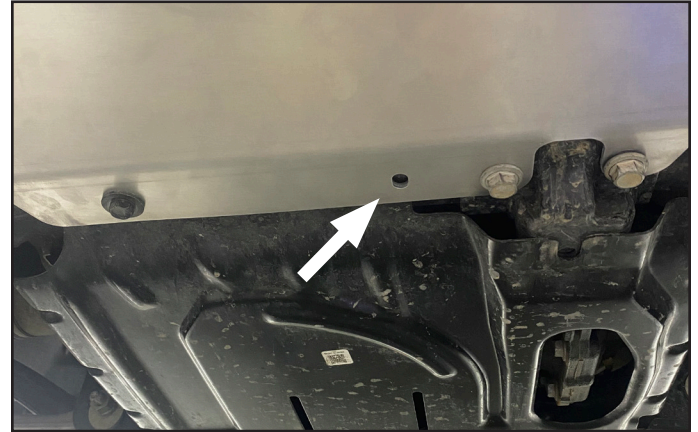


Photo 09

Remove the LOBO Skid Plate and steel factory steel diff skid, and use a drill motor with 5/16" drill bit to drill a hole in the steel diff skid in the marked location. Reinstall the steel diff skid.

- 12. Install the LOBO Skid Plate** re-using each of the OE skid plate bolts as well as the four (4) supplied M10-1.50 X 30MM button head cap screws to attach the Skid to the Intercooler Mounts. It may be necessary to apply upward pressure to the skid plate to align the fastener holes correctly.

- 13. Firmly tighten all fasteners.**

Congratulations! You have completed the installation! Keep reading for important information from LOBO Off-Road, and keep these instructions for future reference.

LOBO OFF-ROAD - 5-YEAR LIMITED WARRANTY

Items manufactured and sold by LOBO Off-Road (hereinafter "LOBO") are covered under a 5-year warranty against manufacturing defects and workmanship. This Warranty applies to the LOBO-manufactured structural components ONLY.

For a period of 5 years from the retail purchase date, LOBO warrants to the original retail purchaser that its products are free from defects in material and workmanship. All other warranties and representations, expressed or implied, are hereby disclaimed, including fitness for merchantability and buyer's intended use or purpose. Buyer assumes all risks as to the selection, suitability and performance of all LOBO products purchased. This limited warranty does not cover damage or impairment in any part due to misuse or use in racing or other forms of competition, improper installation, accident or contact with on-road or off-road hazards, product modification, improper or inadequate cleaning and/or maintenance. Product purchased "used" or "open box" are not covered under warranty. LOBO is not responsible for items damaged during shipping. This warranty is not transferable from the original buyer.

LOBO's 5-Year Limited Warranty covers LOBO-manufactured structural components only. It does not cover paint or powder coat finish, electrical and wiring products, or any other components or processes performed by secondary vendors.

For the original Buyer to be eligible for the limited warranty coverage, the Buyer must provide proof of purchase. Customer's remedy hereunder shall be limited only to repair or replacement (at LOBO's option) of any defective part(s) returned to LOBO at customer's expense. The determination of whether or not a returned part is defective or subject to coverage under the limited warranties stated herein shall be made at LOBO's sole discretion.

This Warranty does not apply to items manufactured by other companies and sold by LOBO, individually or as part of a kit or assembly. Such items are covered only under their respective manufacturer's Warranty. Remedies under other manufacturers' warranties should be pursued directly with the manufacturer.

To file a Warranty Claim, please contact LOBO via email at pitcrew@lobooffroad.com to request a warranty claim form.